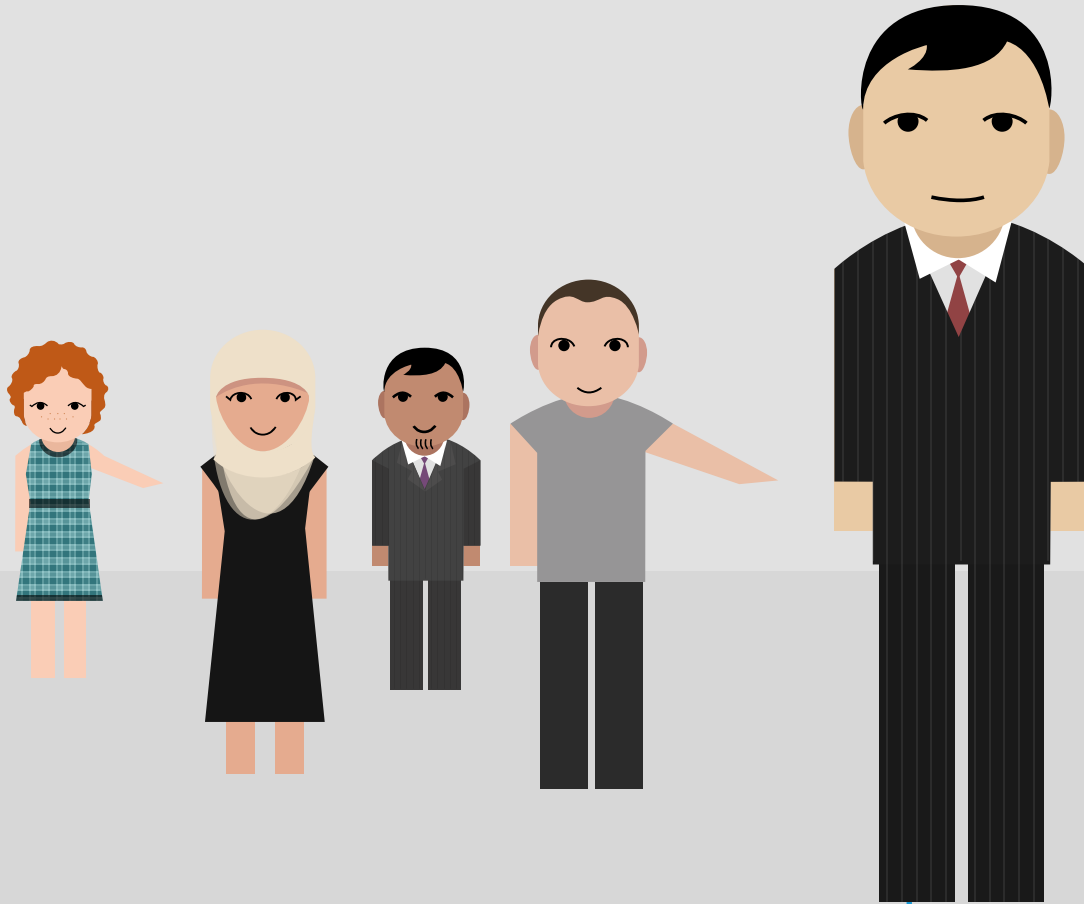


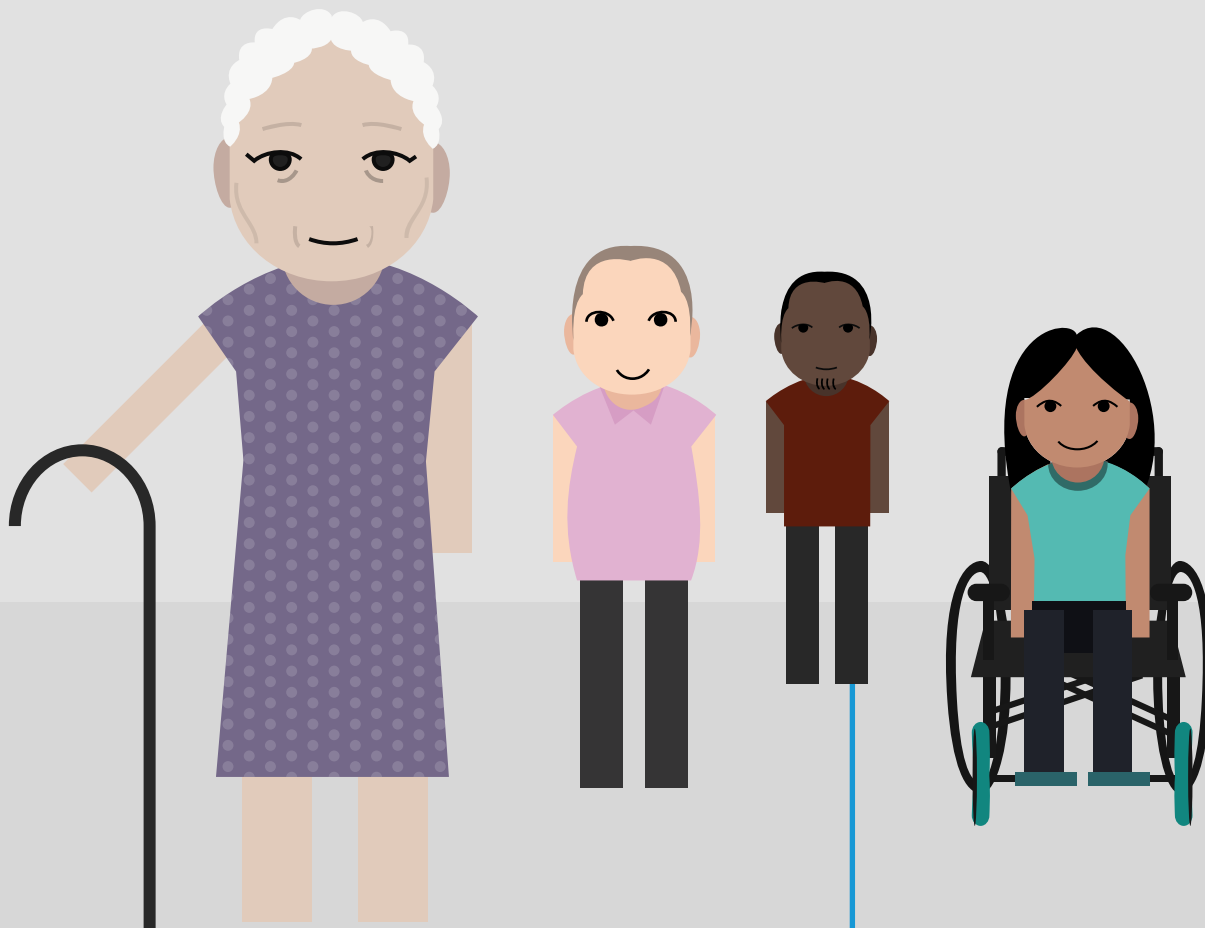
**ONE IN THREE PEOPLE**  
HAVE EXPERIENCE OF THE  
CARE SYSTEM EITHER  
THEMSELVES OR THROUGH  
A MEMBER OF THEIR FAMILY



AFTER THE NHS, **SOCIAL CARE IS THE BIGGEST PRIORITY** FOR WHERE THE ELECTORATE WOULD WANT TO SEE THE GOVERNMENT INCREASE EXPENDITURE.



HALF OF ALL PEOPLE BELIEVE  
**THE GOVERNMENT SHOULD**  
**PAY THE FULL COST**  
OF SOCIAL CARE SERVICES.



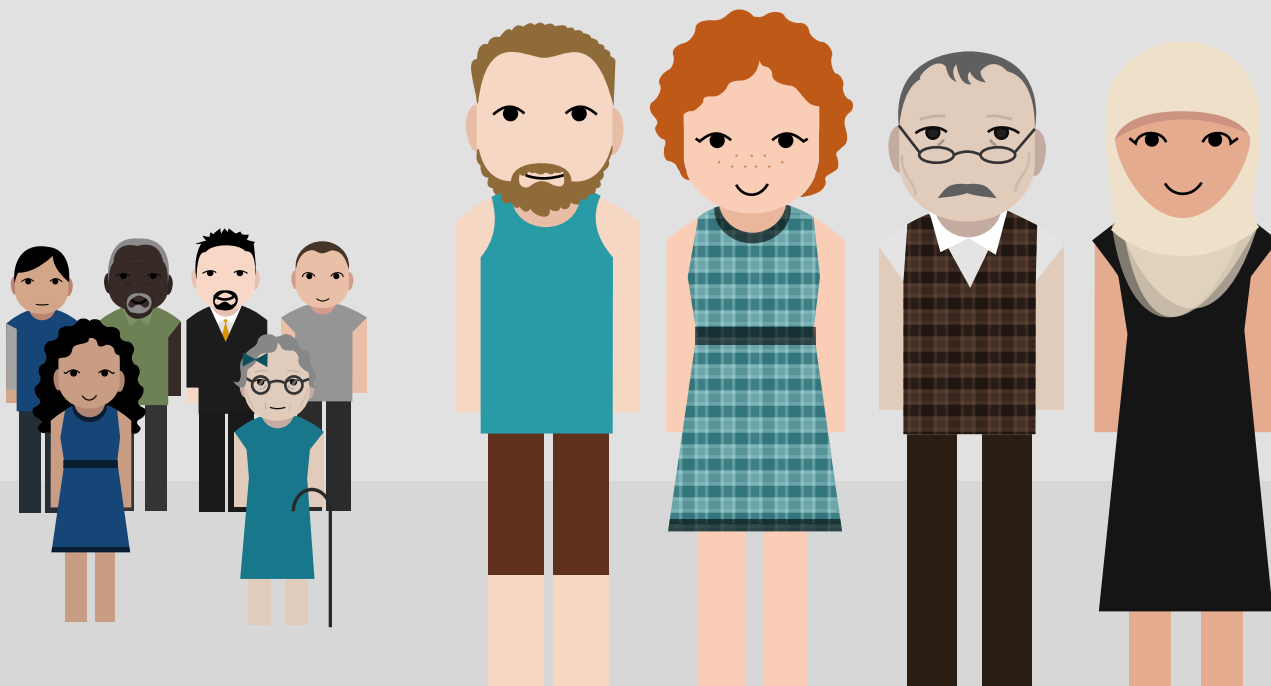
ONLY A QUARTER OF PEOPLE  
BELIEVE THEY WOULD RECEIVE  
CARE THAT WOULD ALLOW  
THEM A **GOOD QUALITY OF LIFE**



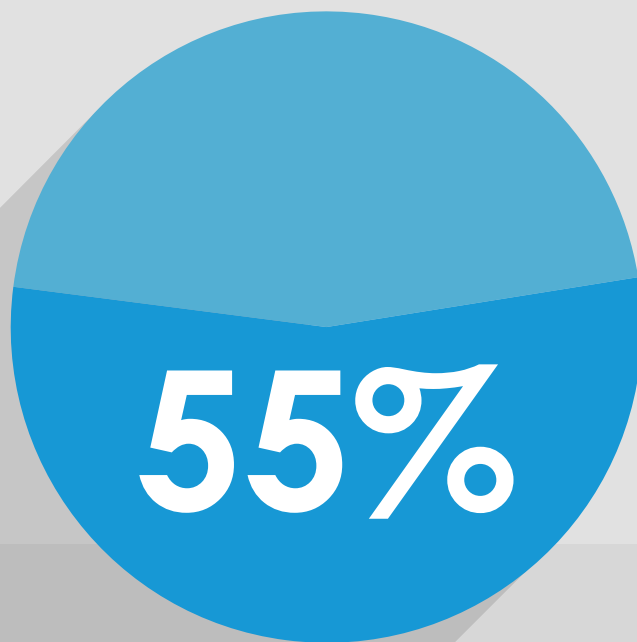
**JUST A QUARTER OF PEOPLE  
BELIEVE THAT SOCIAL CARE  
SHOULD BE PAID FOR BY A  
CAP OF UP TO £72,000.**



7 OUT OF 10 PEOPLE BELIEVE THEY WILL  
BE **UNABLE TO AFFORD SOCIAL CARE**  
FOR THEMSELVES OR A FAMILY MEMBER



4 IN 10 PEOPLE BELIEVE THAT  
**SOCIAL CARE SERVICES WILL WORSEN**  
OVER THE NEXT 2 OR 3 YEARS.



**55% OF PEOPLE THINK THAT THE GOVERNMENT SHOULD BE DOING MORE ON SOCIAL CARE. LESS THAN A QUARTER BELIEVE THAT THEY ARE DOING ENOUGH**